

TECHNICAL DATA SHEET

Perfect brass spray

Art. no. 0893 114 117

P. Qty.: 1 / 12

Outstanding long-term protection and optimum metal surface appearance

Chemical basis	Nitrite combination resin
Contents	400 ml
Colour	Brass coloured
Curing time	80 min
Min. dust-drying time	5 min
Conditions for dust-drying time	at recommended dry layer thickness
Dry layer thickness (first back-and-forth motion)	25 µm
Fully hardening/curing conditions	At recommended dry layer thickness
Recoatable/Can be painted over	Conditional, preliminary testing required
Max. temperature resistance	100 °C
Conditions to maintain shelf life from production	at 10 °C to 25 °C
Shelf life from production	24 Month
Min. grip strength	14 min
Grip strength conditions	at recommended dry layer thickness
Cross-cut test	MAN 0-1
Cross-cut test conditions	in accordance with DIN 53151
AOX-free	Yes
Spot weldable	No
Substrates with good adhesion	Brass, Steel



Application area

For visual enhancement, repair and protection against corrosion of metallic surfaces.

Application information

Substrates:

- Metals. In the event of high requirements with regard to mechanical stress and corrosion protection as well as in particular for critical surfaces such as aluminium or zinc-plated surfaces, pre-treat with a suitable primer.
- Wood
- Glass, ceramic
- Various plastics. In this case, check for compatibility and adhesion in an inconspicuous area. If necessary, pre-prime with a suitable plastic adhesive agent. Not suitable for surfaces made from polyvinyl chloride (PVC), polystyrene (PS), polyethylene (PE), polypropylene (PP) and blends of these (e.g. PP/EPDM)

TECHNICAL DATA SHEET

- Pre-treatment: Sand and thoroughly degrease the surfaces. Only paint on dust-free and dry surfaces.
- Preparation: Thoroughly shake the can for two minutes. Perform a spray test.
- Spraying distance: 15-20 cm
- Spray jet: The spray width can be varied between a minimum and a maximum position by turning the red upper part of the variable spray head. A horizontal or vertical spray pattern can be created by turning the discharge nozzle 90°.
- Spray jet width position
 - Min.: approx. 7 cm
 - Middle: approx. 9 cm
 - Max.: approx. 15 cm
- Spray passes: 2 spray passes. Maintain 10 minutes of intermediate flash-off time between two spray passes. One spray pass corresponds to a dry film layer thickness of approx. 15 µm.
- Drying: The stated drying times refer to a dry film layer thickness of 30 µm and an ambient temperature of 20°C
- Dust-dry: Drying stage 1 according to DIN 53150: 9 min
- Touch dry: Drying stage 3 according to DIN 53150 18 min
- Further processing: Can be painted over with the same product at any time.
- Once work is complete: Once the painting process is complete, turn the can upside down and spray until the valve is empty.

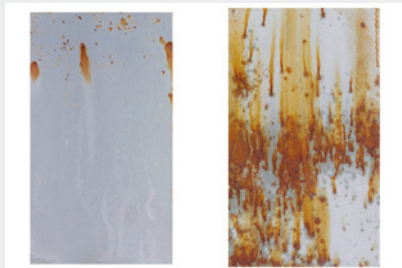
Notice

Not suitable as a primer for PU, MS polymer or hybrid sealing compounds.

Do not coat any safety-relevant plastic parts such as helmets.

Do not paint on surfaces coated with synthetic resin lacquers, as this can lead to lifting and rippling of the old paint.

Corrosion protection after 250 hours of salt spray test according to DIN 50021 SS



Zinc spray bright perfect and competitive product

The above application instructions are recommendations given on the basis of our own tests and experience. We recommend that you carry out your own tests before use. Due to the great variety of different applications and storage and processing conditions, we cannot guarantee a particular application result. We will not accept legal liability for any advice or technical information provided by our free customer hotline unless this advisory service and/or technical information is part of the contractually agreed performance owed by us, or the customer service employee acted willfully or intentionally. We guarantee the consistent quality of our products and reserve the right to make technical changes and improvements.